



What's new in v7

# Contents

- 1 Sage Line 500: Developed for you**
- 2 What's New?**
- 4 Sage Line 500 at a glance**



“At Sage, we understand that mid-sized and larger businesses have varied and complex requirements. From accounting and payroll through to Customer Relationship Management and Enterprise Resource Planning, we offer scalable, integrated software to meet their needs.”

**Paul Stobart, CEO, UK and Ireland Region, Sage (UK) Limited**

# Sage Line 500: Developed for you

**Sage Line 500 is built on a solid platform of tried and tested technology, and is an important part of thousands of organisations' infrastructure today. However, just as businesses don't stand still, we are constantly looking for ways to help you extract greater value from your Sage software - improving efficiency and productivity and, in doing so, increasing your competitive edge.**

Our commitment to your existing investment is clear through a series of regular software releases, each incorporating a large number of customer-requested features. Since January 2005 we have delivered three major releases, and we are now proud to announce Sage Line 500 v7.

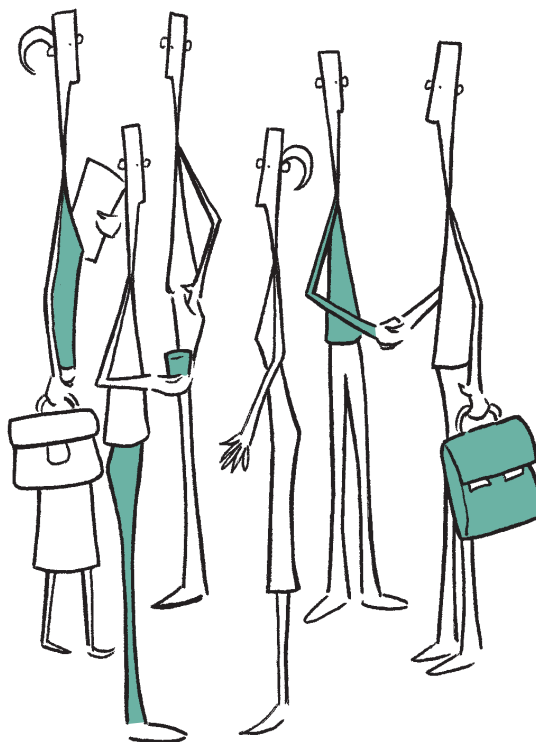
## Sage Line 500 v7

The improvements in this new version are grouped around a number of key themes:

- **Usability:** The release of Sage Line 500 v6 brought a major improvement to the user experience of the software, particularly through use of the latest Windows™ 'look and feel'. With v7 we're focusing on flexibility and efficiency – making it easier and faster to use common functions.
- **Customer Wish List:** we take customer requests for changes very seriously – after all, it's you

who uses the software day in, day out. We've introduced an online voting system so that customers can steer our decisions on what to change, and this is reflected in the deliverables for v7.

- **Integration:** In many cases Sage Line 500 is integrated with other applications, both from Sage and third parties, to create a single solution covering many areas of a customer's business. We aim to make this more straightforward and v7 includes further tools to do this.
- **International Support:** A key strength of Sage Line 500 is its availability in foreign language versions. With v7 we are strengthening the support for existing language variants.
- **Platform Support:** Technology in use in businesses continually moves on, and Sage Line 500 v7 supports such developments.



# What's New?

**Sage Line 500 v7 delivers many significant improvements designed to improve the usability of the software and make it work even harder for your business. While not exhaustive, the following pages summarise the key developments across the system.**

**To discuss how these latest developments could translate into measurable benefits for your business, please contact your Sage Business Partner.**

## What's new in Finance

- **Credit Management Module:** We have significantly enhanced this module to support more efficient management of the credit control process, including improved enquiries, tailored call lists, support for group working and better management of statement/order point customer relationships:
  - Efficient credit management of the statement / order-point customer relationship, ie when multiple order-point customers pay through the same statement account
  - You have direct access to all necessary credit control information and functionality from the call entry option
  - You now have separate control of credit stopped, credit held and operator held orders using a dynamic queuing system
  - Each credit controller can precisely tailor their call lists to their own specific requirements
  - Using the System Manager you can specify which credit controllers may release orders, alter credit limits etc.

- Credit control teams can work on a single list of tasks
- Cheques processed in Accounts Receivable will automatically be removed from the Promised Cheque report in the Credit Management module.
- **Aged Debtor and Creditor Reports:** You can now set a minimum balance for inclusion in the reports, making it easier to focus on the customers with larger outstanding balances.
- **Automated General Ledger year-end journal:** You can allow the system to automatically post the balance of all profit & loss accounts, at the General Ledger year-end, to one profit & loss account, with a contra entry to a balance sheet account. The resulting journal is reported in both the journal audit trail and on the final trial balance report.
- **Reallocation of cash:** You can now re-allocate a cash payment to a different invoice, for example if it's been assigned to the wrong invoice or the customer's cheque has bounced. The original allocation and correcting transactions can now be excluded from the customer statement if required, to avoid confusion.
- **Stock 'Hold' and 'Obsolete' controls:** A stock item might become obsolete or its condition means it should not be sold or used for manufacturing. New functionality in v7 allows you to control how this is handled in the system:
  - Individual products can be marked as 'obsolete' or 'held'
  - You can now choose whether to forbid or warn users when they attempt to use obsolete stock code in sales, purchasing or manufacturing
  - Obsolete stock can be sold but cannot be purchased
  - Held stock cannot be sold or purchased
- You can fulfil a sales order line partly from stock, and partly via back to back. This will allow you to maximise use of your existing stock.
- A new stock replenishment category allows you to specify whether items in that category have to be made, have to be bought, can be either or cannot be either
- When a works order is completed and the finished items are being put back into stock, the system will check if the works order is linked to a sales order detail line. If so, the stock will automatically be allocated to the sales order
- If there are multiple completions against the works order, the system will allocate stock to the sales order until the order is fully allocated. Any 'overs' will be left in stock as free stock

## What's new in Distribution and Manufacturing

- **Back to Back orders:** We've enhanced this existing functionality, which allows you to create purchase orders directly from a sales order:
  - A sales order created in the Sales Order Processing or Telesales module can contain a mix of normal and back to back lines

- You can choose whether held or obsolete stock is visible in enquiries and browse windows across many different modules
- **Customer Returns module:** We've significantly enhanced this module to speed up the processing of customer returns and allow tighter control over the quantity of goods being returned:
- We've improved the workflow for returns log data entry, speeding up the process and improving accuracy. Also, you can perform bulk completion of returns logs.
- You can now optionally raise a replacement order, using default values where possible
- You can optionally include a re-stocking charge when a credit note is raised
- **Credit Notes:** You can now create a credit note directly from a sales invoice – for example where the pricing was incorrect or the customer has requested a refund. This could save time and the risk of errors in re-keying, particularly if you need to credit a complete order and there are many lines on the original invoice.
- **Alternate Routes and Bills of Materials:** We've improved the usability of this functionality by enhancing browses, loading default routes without requiring user intervention and introducing additional controls to avoid user error.
- **Bill of Materials drill down:** You can now drill down into a Bill of Materials enquiry from the sales order enquiry detail lines, and other relevant screens.

- **Inventory Batch Queue sequencing:** A new option allows you to switch batch queue sequencing from date & time sequencing to absolute sequencing. This has two benefits – retention of true FIFO when moving batches from bin to bin or warehouse to warehouse, and significant performance improvements in batch queue clear-down.
- **Multi Company Batch Queue cleardown:** A new option allows you to clear down the stock batch queue in scenarios where the stock file is shared across multiple companies.

### What's new – Language Support

We've updated the existing language forms and online to help to cover the new features in v7. Additionally we've provided forms for Works-orderless production, Product Management and the Manufacturing Extension Pack in French, German\* and Spanish.

### What's new – Universal Client

Our aim is to give you the same functionality when using the Universal Client (ie accessing Sage Line 500 via a Web browser) as when using the desktop or 'GUI' version. Various enhancements have been made to the Universal Client in v7, including the ability to search in the F11 print preview.

### What's new – Integration

Customers have increasingly sophisticated requirements in terms of creating a single integrated software environment, reducing data duplication and providing efficient business processes across a number of software packages. We are committed to making Sage Line 500 easier to integrate with other software, whether Sage or third-party. With v7 we've:

- Updated the Application Programming Interfaces (APIs) used to integrate Sage Line 500 with Sage SalesLogix
- Added a large number of new APIs, allowing integration with more of the Sage Line 500 system particularly around the sales order to cash process. One example of where this could be beneficial is the automatic processing of Web orders
- Migrated the API server and tools to .Net2, in line with industry norms

### What's new – Support for newer technology

It's important that Sage Line 500 remains compatible with changing Unix and Microsoft (R) Windows operating systems, databases and other software in use in customer businesses.

We maintain this compatibility on an ongoing basis through interim releases. With v7 we have taken the opportunity to update the Universal Client to provide support for Microsoft (R) Internet Explorer 7.

\*planned for availability January 2008

# Sage Line 500 at a glance

System Module/Features	Sage Line 500 v7	Sage Line 500 v6	Sage Line 500 v5.5	Sage Line 500 v5	CS/3 V4
<b>Finance Modules</b>					
Generic Auditing Module	✓	Improved	✓	✓	✓
Intrastat Declaration Enhancements	✓	Improved	Improved	✓	✓
Credit Management Module	Improved	✓	✓	✓	✓
Full Euro Support	✓	✓	✓	✓	✓
Accounts Receivable Multi-Currency	✓	✓	✓	✓	
General Ledger Document Header	✓	✓	✓		
AP & AP Prepayments	✓	✓	✓		
Retrospective AR & AP Statements	✓	✓	✓		
Enhanced Transaction Tracking	✓	✓	✓		
Sales VAT Posting Enhancements	✓	✓	✓		
VAT Claw back Posting Enhancements	✓	✓	✓		
Extended Purchase Invoice Numbers	✓	Improved	✓		
Payment types by transactions	✓	✓			
AP and PO Invoice Payment Status	✓	✓			
Flexible Factoring for Supplier Invoices	✓	✓			
AP Template Invoices	✓	✓			
Automatic Reversal of GL Journal and AP Invoice	✓	✓			
Enhanced Bad Debt Management	✓	✓			
VAT Exception Reporting	✓	✓			
International Bank Account Numbers	✓	✓			
Aged Debtors Analysis	Improved	✓	✓	✓	✓
Automatic General Ledger Year End Journal	✓				
Flexible Item Reallocation	✓				
<b>Manufacturing &amp; Distribution Modules</b>					
EU Waste Management Regulations Module	✓	✓	✓	✓	✓
3 Way Matching and Variance Analysis	✓	✓	✓	✓	✓
Supplier Contracts	✓	✓	✓	✓	✓
Passive Warehouse Management	✓	✓	✓	✓	✓
Product Configuration Enhancements	✓	✓	✓	✓	✓
Sub-Contracting Module	✓	✓	✓	✓	✓
XML Interfaces	✓	✓	✓	✓	
Extended Discounts	✓	✓	✓	✓	
Product Hierarchies	✓	✓	✓	✓	
Production Scheduling System	✓	✓	✓		
Product Management Module	✓	✓	✓		
Works Orderless Production Module	✓	✓	✓		
Manufacturing Extension Pack	✓	✓	✓		
Graphical Master Production Schedule Module	✓	✓	✓		
Graphical Planning Module	✓	✓	✓		
Enhanced Project Support for Sales Orders and Purchase Orders	✓	✓			
Enhanced Product Code Search	✓	✓			

System Module/Features	Sage Line 500 v7	Sage Line 500 v6	Sage Line 500 v5.5	Sage Line 500 v5	CS/3 V4
<b>Manufacturing &amp; Distribution Modules continued</b>					
User Defined Stock Status	✓	✓			
Release Stopped Orders	Improved	✓	✓	✓	✓
Automatic Credit Notes	✓				
Enhanced Back to Back Orders	✓				
Stock 'Hold' and Obsolete 'Controls'	✓				
Customer Returns Module	Improved	✓	✓	✓	
<b>System Module/Features</b>					
Alternative BOMS and Routes	✓	✓			
'Where-used' enquiry on alternative BOMS	✓	✓			
BOM clear-down	✓	✓			
Rough Cut Capacity Planning Demand Filtering	✓	✓			
Works Order Variance and Cost Analysis	✓	✓			
Dynamic Product Lead Times	✓	✓			
Multiple Cost Sets	✓	✓			
<b>E-business And Technology</b>					
Client Enhancements	✓	Improved	Improved	✓	✓
Context Sensitive Help	✓	✓	✓	✓	✓
Online Product Documentation	✓	✓	✓	✓	✓
Web Sales	✓	✓	✓	✓	✓
Generic Auditing Module	✓	✓	✓	✓	✓
XML printing	✓	✓	✓	✓	
Archiving Module	✓	✓	✓		
Multi-Server Architecture	✓	✓	✓		
Extended Drill-down Functionality	✓	✓	✓		
Auditors Guide	✓	✓	✓		
Application Integration Server	✓	✓	✓		
Improved password security	✓	✓	Improved		
<b>Services</b>					
Sub-contracting Module	✓	✓	✓	✓	
Project Billing Module	✓	✓	✓		
Project Ledger to General Ledger Links	✓	✓			
Project Support for EDI AP invoices and Purchase Orders	✓	✓			
Project Support for POP Accruals	✓	✓			
<b>Reporting</b>					
Sage Enquiries Module	✓	✓	✓		
Sage Business Intelligence Module	✓	✓	✓		
Sage Paperless Suite	✓	✓	✓		
Application Programming interfaces (APIs)	Improved	✓			

With this release, the provision of foreign language packs has been extended to include Works Orderless Production, Product Management and the Manufacturing Extension Pack in French, German and Spanish. The range of supported operating systems for client computers has been updated to provide support of Internet Explorer 7 in the Universal Client.

**Note:** Microsoft® Vista is supported in the Universal and GUI client but Vista support is not currently provided for the following Line 500 components: GUI Forms Designer; Paperless; Graphical Planning; Graphical MPS and Production Scheduling.

**Your Sage Business Partner:**



**To discuss the right Sage solution for your business, please contact Sage.**

**Telephone: 0845 111 9988**

**e-mail: [customer.development@sage.com](mailto:customer.development@sage.com)**

**Web: [www.sage.co.uk](http://www.sage.co.uk)**



Sage (UK) Limited,  
North Park,  
Newcastle upon Tyne,  
NE13 9AA

Tel 0845 111 9988  
Fax 0845 245 0297  
[www.sage.co.uk](http://www.sage.co.uk)

© Sage (UK) Limited 2007 10/07 3158L 62091070/GJ.05



**50% recycled**  
This leaflet is printed on 50% recycled paper